



ICI Dulux (Pty) Ltd
PO Box 123704
Alrode 1451
8 Juyn Street
Alrode
Alberton

T +2711 861 1000
F +2711 864 6701
E info@dulux.co.za
www.dulux.co.za
www.akzonobel.com



AkzoNobel

Tomorrow's Answers Today

10 December 2012

REFERENCE: MG022-2012-12

Coral Grove Body corporate

Attn: Troy England
Tel: 078 155 0644

Dear Sir,

DULUX SPECIFICATIONS FOR PREVIOUSLY PAINTED EXTERIOR SURFACES FOR CORAL GROVE.

Thank you for giving Dulux (Pty) Ltd the opportunity to provide specifications for the above project.

We assure you of our best service at all times. Should you require any further information please do not hesitate to contact us.

Yours sincerely

Madeleen Gryevenstein
Specifier Account Manager
Mobile: 082 465 2116
Email: madeleen.gryevenstein@akzonobel.com

DULUX SPECIFICATIONS

CORAL GROVE

<u>SCOPE OF WORK</u>			Page No.
SECTION 1: SPECIFICATIONS FOR EXTERIOR SURFACES			
	SUBSTRATE	PRODUCTS	
SPEC 1.	EXTERIOR VERTICAL WALLS PLASTERED	ONE COAT DULUX TRADE ECOSURE PLASTER PRIMER(patching) TWO COATS DULUX WEATHERGUARD ULTRASMOOTH Pastel – Ultra deep colours can be used	4
SPEC 1.1	EXISTING PREVIOUSLY PAINTED VERTICAL WALLS WITH RISING/LATERAL DAMP – 2M FROM FLOOR LEVEL	TWO COATS FIXIT DAMPSHIELD (full) TWO COATS DULUX WEATHERGUARD ULTRASMOOTH	5
SPEC 2.	EXTERIOR HORIZONTAL / SLOPING SURFACES PLASTERED	TWO COATS DULUX RAINSHIELD FIBRE-REINFORCED WATERPROOFER (full) TWO COATS DULUX WEATHERGUARD ULTRASMOOTH	6
SPEC 3.	EXTERIOR SOFFITS, CEILINGS & EAVES	ONE COAT DULUX TRADE ECOSURE PLASTER PRIMER(patching) TWO COATS DULUX TRADE 65 MATT	7
SPEC 4.	EXTERIOR FIBRE-CEMENT CLADDING	ONE COAT DULUX TRADE ECOSURE PLASTER PRIMER (full) TWO COATS DULUX WEATHERGUARD ULTRASMOOTH	8
SPEC 5.	EXTERIOR GALVANISED STEEL	Cleaner: Dulux Galvkleen ONE COAT DULUX PRIMER FOR GALVANISED IRON ONE COAT DULUX TRADE UNIVERSAL UNDERCOAT TWO COATS DULUX PEARLGLO WATER-BASED EGGSHELL ENAMEL	9
SPEC 6.	EXTERIOR TIMBER – TO BE PAINTED	ONE COAT DULUX WOOD PRIMER ONE COAT DULUX TRADE UNIVERSAL UNDERCOAT TWO COATS DULUX DULUX PEARLGLO WATER-BASED EGGSHELL ENAMEL	10
SPEC 7.	BOUNDARY WALLS – PLASTERED	ONE COAT DULUX TRADE ECOSURE PLASTER PRIMER TWO COATS DULUX ACRYLIC PVA	11
DULUX : BEST PAINTING PRACTICE / SURFACE PREPARATION			
GUARANTEES AND CONDITIONS			22

DULUX SPECIFICATIONS

CORAL GROVE

PLEASE NOTE

Moisture readings must be taken prior to commencement of work by a Dulux Representative to establish moisture levels within substrate, and to confirm or revise specification if required.

Specifications for new surfaces are often written sight unseen, or off-plan. It is therefore recommended that all possible problems and defects be addressed.

CAUTION: Dampness in the structure will affect the performance of paint systems. Prior to painting, a reputable damp proofing specialist is to establish and repair all causes of moisture in the structure such as rising/lateral dampness etc. All to be done in strict accordance with approved damp proofing methods.

ICI Dulux (Pty) Limited does not recommend painting before all causes of moisture ingress have been established and cured by a reputable damp proofing specialist.

N.B. All treatment of dampness is excluded from the Dulux Scope of Work and Dulux Paint Warranties.

Spreading rates may vary from what has been specified as it is dependent on the porosity and profile of the substrate.

Areas where rubberized / Bituminous coating is to be painted, will need to be coated with Dulux Trade Universal Undercoat prior to painting with any other paint, other than Dulux Trade Bituminous Aluminium paint where it will not be required, to prevent bleeding. These surfaces will not be guaranteed.

Should any other products, other than what has been specified in this document, be used, the guarantee will become null & void with immediate effect.

The appointed contractor is to advise ICI Dulux of start date 10 working days prior to commencement of job, where Quality Assurance has been requested.

Request for Quality Assurance by Dulux Technical Services Department must be done in writing once a painting contractor is appointed for consideration by ICI Dulux, as not all projects qualify for Quality Assurance.

Distribution of Quality Assurance reports will be done on a fortnightly basis (unless the pace of the project will determine a different rate) to requested parties.

The client appointing the contractor will remain in authority of issuing instructions to said appointed contractor, whereas ICI Dulux has no authority to do so.

DULUX SPECIFICATIONS

CORAL GROVE

SECTION 1: SPECIFICATIONS INTERIOR SURFACES

SPEC 1. EXTERIOR VERTICAL WALLS

PLASTERED



PASTEL – ULTRA DEEP COLOURS

Before painting can commence, every problem must be repaired in strict accordance with our recommendations in attached instructions.

Ensure surfaces are sound, clean and thoroughly dry - moisture content should not exceed 12%. Brush down with a stiff brush to remove all loose contaminants.

Apply COAT 1 as a patch primer to repaired, exposed and surfaces where high pressure washing has not removed all chalky paint residues and exposed substrate areas and allow overnight drying.

Any imperfections repaired with crack fillers, it is essential to apply a coat of DULUX TRADE ECOSURE PLASTER PRIMER over the repaired areas, once the crack filler has dried properly. Failure to do this will result in uneven sheen levels between the repaired and normal areas.

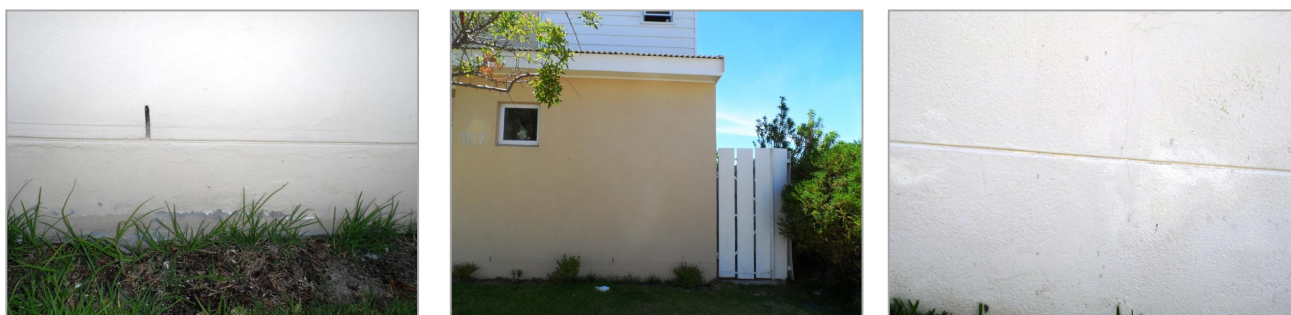
Apply COATS 2 and 3 to achieve a closed film and solid colour.

	<u>PAIN T SYSTEM</u>	RECOATING TIME AT 23°C	SPREADING RATE per m ² per litre
COAT 1	DULUX TRADE ECOSURE PLASTER PRIMER (PATCHING)	4 hours	10
COAT 2	DULUX WEATHERGUARD ULTRASMOOTH	4 hours	8
COAT 3	DULUX WEATHERGUARD ULTRASMOOTH	4 hours	8

DULUX SPECIFICATIONS

CORAL GROVE

SPEC 1.1 EXISTING PREVIOUSLY PAINTED VERTICAL WALLS WHERE RISING/LATERAL DAMPNESS HAS BEEN IDENTIFIED –2M from floor level please follow the spec below – above 2M level – please follow SPEC 1



Areas of rising/lateral dampness (painted in 2m high sections corner to corner)

Before painting can commence, every problem must be repaired in strict accordance with our recommendations in attached instructions.

Ensure surfaces are sound and thoroughly clean. The moisture content of the substrate should not exceed 50%.

Brush down with a stiff brush to remove all loose contaminants.

DAMPSHIELD IS A TWO COAT APPLICATION.

Apply COAT 1 (Thinned by 10% with water) and apply as an overall primer. Apply COAT 2 as the second coat of primer (unthinned) and allow to dry. Apply the coating in a stepwise manner in small blocks. It is recommended that the coating be applied in 1 m² areas at a time.

Apply COATS 3 and 4 to achieve a closed film and solid colour.

*NB. Finishing coat only available in White and Bases 7-9

- Coat 1 & 2 should be applied as full coats

	<u>PAIN T SYSTEM</u>	RECOATING TIME AT 23°C	SPREADING RATE per m ² per litre
COAT 1	FIXIT DAMPSHIELD (thinned 10% with water)	4 hours	5
COAT 2	FIXIT DAMPSHIELD (unthinned)	4 hours	5
COAT 3	DULUX WEATHERGUARD ULTRA SMOOTH	4 hours	8
COAT 4	DULUX WEATHERGUARD ULTRA SMOOTH	4 hours	8

DULUX SPECIFICATIONS

CORAL GROVE

SPEC 2. EXTERIOR HORIZONTAL / SLOPING SURFACES –

PLASTERED

PARAPETS, CILLS, WALLTOPS, COPINGS AND JOINTS



PASTEL – ULTRA DEEP COLOURS

Before painting can commence, every problem must be repaired in strict accordance with our recommendations in attached instructions.

Apply COATS 1 and 2, allowing 4 hours drying between coats.

The waterproofing system should be applied to the whole length of the wall top. Apply up, over, and down parapets, and extend at least 25mm down the sides. To prevent capillary action (water cohesion) the waterproofing system must be worked well into the substrate.

Finish with COATS 3 and 4, in the required colour, to achieve saturation and solid colour. Allow thorough drying between coats.

	<u>PAIN T SYSTEM</u>	RECOATING TIME AT 23°C	SPREADING RATE per m ² per litre
COAT 1	DULUX RAINSHIELD FIBRE REINFORCED WATERPROOFER	4 hours	2
COAT 2	DULUX RAINSHIELD FIBRE REINFORCED WATERPROOFER	4 hours	2
COAT 3	DULUX WEATHERGUARD ULTRASMMOOTH	4 hours	8
COAT 4	DULUX WEATHERGUARD ULTRASMMOOTH	4 hours	8

DULUX SPECIFICATIONS

CORAL GROVE

SPEC 3. EXTERIOR CONCRETE SOFFITS, SKIMMED PLASTERBOARD CEILINGS / FIBRE-CEMENT EAVES



CONCRETE SOFFITS

Ensure surfaces are clean and free of dust and debris. Remove any uncured cement, grease, and mould-release agents by high-pressure water blast, or wash with a strong solution of sugar soap. Rinse off thoroughly with clean water.

STUBBORN DIRT AND GRIME. Acid etch the surface with a solution of hydrochloric acid to remove laitance, uncured cement, etc. as follows: On steel or power floated concrete (very smooth), use one (1) volume hydrochloric acid to two (2) volumes water. More than one application may be necessary to achieve a paintable surface. On wood floated concrete (rough), use one (1) volume hydrochloric acid to four (4) volumes water. N.B. Hydrochloric acid is corrosive - please wear protective clothing, gloves, masks and eye goggles against splashes. Allow the acid solution to react for 15 minutes and then wash away all acid with copious amounts of clean water. Remove excess water and allow thorough drying – no more than 12% moisture content.

Blow holes and cracks wider than 0,3mm should be filled with pure acrylic mastic.

SKIMMED PLASTERBOARD CEILINGS / FIBRE-CEMENT EAVES

Ensure surfaces are sound, clean and thoroughly dry. Remove any loose dust and contaminants with soft, clean rags.

ALL

Apply COAT 1 as a patch primer to repaired, exposed and surfaces where high pressure washing has not removed all chalky paint residues and exposed substrate areas and allow overnight drying.

Any imperfections repaired with crack fillers, it is essential to apply a coat of DULUX TRADE ECOSURE PLASTER PRIMER over the repaired areas, once the crack filler has dried properly. Failure to do this will result in uneven sheen levels between the repaired and normal areas.

Finish with COATS 2 and 3 to achieve a closed film and solid colour.

	<u>PAINT SYSTEM</u>	RECOATING TIME AT 23°C	SPREADING RATE per m ² per litre
COAT 1	DULUX TRADE ECOSURE PLASTER PRIMER (patching)	4 hours	10
COAT 2	DULUX TRADE 65 MATT PVA	4 hours	8
COAT 2	DULUX TRADE 65 MATT PVA	4 hours	8

DULUX SPECIFICATIONS

CORAL GROVE

SPEC 4. EXTERIOR FIBRE-CEMENT CLADDING



Before painting can commence, every problem must be repaired in strict accordance with our recommendations in attached instructions.

Ensure surfaces are sound, clean and thoroughly dry - moisture content should not exceed 12%. Brush down with a stiff brush to remove all loose contaminants.

Apply COAT 1 as a primer and allow drying. Any imperfections repaired with crack fillers, it is essential to apply a coat of DULUX TRADE ECOSURE PLASTER PRIMER over the repaired areas, once the crack filler has dried properly. Failure to do this will result in uneven sheen levels between the repaired and normal areas.

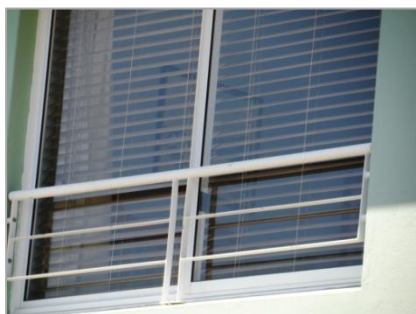
Apply COATS 2 and 3 to achieve a closed film and solid colour.

	<u>PAINT SYSTEM</u>	RECOATING TIME AT 23°C	SPREADING RATE per m ² per litre
COAT 1	DULUX TRADE ECOSURE PLASTER PRIMER	4 hours	10
COAT 2	DULUX WEATHERGUARD ULTRASMooth	4 hours	8
COAT 3	DULUX WEATHERGUARD ULTRASMooth	4 hours	8

DULUX SPECIFICATIONS

CORAL GROVE

SPEC 5. EXTERIOR GALVANISED STEEL



To remove grease, salts and contamination, bristle-scrub the entire surface with DULUX GALVKLEEN, (Cleaner), thinned 20% by volume with water.

Before the GALVKLEEN dries, remove residues with clean running water, preferably under pressure.

To ensure that all the grease has been removed, test for a "water- break" free surface (running water should not form droplets). The cleaning process with GALVKLEEN should be done in small areas, as it is very difficult to remove GALVKLEEN from a substrate once it has dried.

Apply COAT 1 as an overall primer and allow drying – a minimum of 18 hours, and a maximum of 48 hours should be allowed before over-coating.

Apply COAT 2 as an overall undercoat and allow overnight drying.

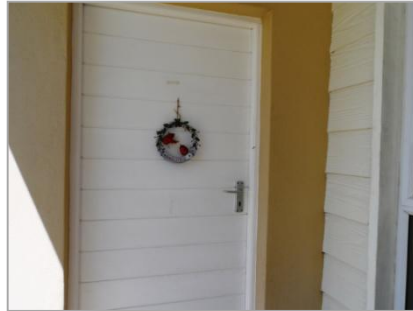
Finish with COATS 3 & 4, unthinned, to achieve a closed film and solid colour.

	<u>PAINT SYSTEM</u>	RECOATING TIME AT 23°C	SPREADING RATE per m ² per litre
CLEANER	DULUX GALVKLEEN CLEANER FOR GALV. IRON		-
COAT 1	DULUX PRIMER FOR GALVANISED IRON	18 hours	10
COAT 2	DULUX TRADE UNIVERSAL UNDERCOAT	18 hours	10
COAT 3	DULUX PEARLGLO WATER-BASED EGGSHELL ENAMEL	4 hours	10
COAT 4	DULUX PEARLGLO WATER-BASED EGGSHELL ENAMEL	4 hours	10

DULUX SPECIFICATIONS

CORAL GROVE

SPEC 6. EXTERIOR TIMBER – TO BE PAINTED



Ensure wood is dry (less than 12% moisture content).

Treat all knots and resinous areas to prevent subsequent staining of paint coatings.

Ensure that all nails, pins and screws are embedded well below the surface, primed with Dulux Trade Steel Primer, and filled with appropriate wood filler.

Apply COAT 1 as a primer and allow overnight drying. COAT 1 may be thinned up to 15% with mineral turpentine to aid absorption.

N.B. Backs of wood frames and joinery in contact with brickwork and plaster must be painted before building in, to prevent moisture seeping into the wood from the mortar bedding.

Inaccessible parts of purpose-made joinery must be painted before the joinery is assembled.

External structural timbers must be painted before the timbers are fixed in position. These include backs of timber fascia and barge boards, sprocket ends, purlins, etc.

Light sanding between coats is essential to obtain a smooth finish.

Apply COAT 2 as an overall undercoat.

Finish with COATS 3 and 4 to achieve a closed film and solid colour.

	<u>PAIN T SYSTEM</u>	RECOATING TIME AT 23°C	SPREADING RATE per m ² per litre
COAT 1	DULUX PRIMER FOR WOOD	18 hours	10
COAT 2	DULUX TRADE UNIVERSAL UNDERCOAT	18 hours	10
COAT 3	DULUX PEARLGLO WATER-BASED EGGSHELL ENAMEL	4 hours	10
COAT 4	DULUX PEARLGLO WATER-BASED EGGSHELL ENAMEL	4 hours	10

DULUX SPECIFICATIONS

CORAL GROVE

SPEC7. BOUNDARY WALLS – PLASTERED



Before painting can commence, every problem must be repaired in strict accordance with our recommendations in attached instructions.

Ensure surfaces are sound, clean and thoroughly dry - moisture content should not exceed 12%. Brush down with a stiff brush to remove all loose contaminants.

Apply COAT 1 as a primer and allow drying. Any imperfections repaired with crack fillers, it is essential to apply a coat of DULUX TRADE ECOSURE PLASTER PRIMER over the repaired areas, once the crack filler has dried properly. Failure to do this will result in uneven sheen levels between the repaired and normal areas.

Apply COATS 2 and 3 to achieve a closed film and solid colour.

	<u>PAINT SYSTEM</u>	RECOATING TIME AT 23°C	SPREADING RATE per m ² per litre
COAT 1	DULUX TRADE ECOSURE PLASTER PRIMER	4 hours	10
COAT 2	DULUX ACRYLIC PVA	4 hours	8
COAT 3	DULUX ACRYLIC PVA	4 hours	8

Boundary walls, garden walls and all freestanding structures: Because of the absence of a Damp Proof Course, as well as possible earth retention, these walls should be treated as maintenance items.

DULUX SPECIFICATIONS

CORAL GROVE

SECTION 2: SURFACE PREPARATION

CAUTION: Dampness in the structure will affect the performance of paint systems. Prior to painting, a reputable damp proofing specialist to establish and repair all causes of moisture in the structure such as rising/lateral dampness etc. All to be done in strict accordance with approved damp proofing methods.

N.B. All treatment of dampness is excluded from the Dulux Scope of Work and Dulux Paint Warranties.

ICI Dulux (Pty) Limited does not recommend re-painting before all causes of moisture ingress have been established and cured by a reputable damp proofing specialist.

CAUTION: Specifications for new surfaces are often written sight unseen, or off-plan. It is therefore recommended that all possible problems and defects be addressed.

BEST PAINTING PRACTICE

DATA BULLETIN NO. D75

DATE: July 2012

PREVIEW TO THE IMPORTANCE OF GOOD PAINTING PRACTICE AND THE KEY ELEMENTS

Sound Surfaces Produce Sound Coating Systems!

Paint coatings are composed of different chemicals, which combine synergistically to provide the paint with its properties. However, in order to derive the optimum paint properties and maximise the longevity of the coatings, it is of paramount importance that the paint coating is applied using best painting practices and according to the manufacturer's specifications. In the main, it is essential that the substrate to which the paint coating is applied is free of defects that will affect the adhesion of the coating system. Adhesion to the substrate is the key to coating longevity. In addition, it is important to use a paint coating system that will protect the building substrates and enhance the aesthetics of the building. This document addresses all the elements of surface defects, and provides detailed instructions for the repair, removal, cleaning and general preparation that is required prior to the painting of new and existing plaster, concrete, brickwork, and building boards.

Prevention is better than cure and the secret of a perfect, long-lasting paint finish is a sound, clean and dry substrate, and the correct use of products. It is important to note that for optimum coating performance, fresh plaster should be allowed to dry and cure adequately, i.e. one week drying for every 5mm thickness, and longer in cold or damp weather.

DULUX SPECIFICATIONS

CORAL GROVE

INDEX

1. DEFECTS IN BUILDINGS AND REMEDIES

1.1 Dampness and Moisture in Walls

Structural dampness

Remedy: Rising dampness in solid walls

Remedy: Dampness in boundary walls, earth-retaining walls and any free-standing structures

Remedy: Areas prone to penetrating damp

Remedy: Efflorescence and lime bloom

1.2 Defects and cracks in plaster and concrete

Cracking

Remedy: Hair cracks (-0.2mm)

Remedy: Medium plaster cracks (+0.2mm and -2mm)

Remedy: Extensive map-crazed cracks

Remedy: Large structural cracks (+2mm), holes and corner cracks

Remedy: Movement/expansion joints

Remedy: Spalling/carbonating/friable plaster and concrete

Remedy: Mapping/repair witnesses / Rough, uneven plaster

2. PREPARATION AND PRIMING

2.1 Cleaning

Preparation Exterior

Preparation Interior

Fungal growth (lichen and algae)

Pre-cast concrete

2.2 The correct use of primers

2.3 Touching up of painted surfaces

3. GENERAL PRECAUTIONS AND ADDITIONAL INFORMATION

4. BASIC FIRST AID

5. LEAD FREE

DULUX SPECIFICATIONS

CORAL GROVE

1. DEFECTS IN BUILDINGS AND REMEDIES

1.1 Dampness and Moisture in Walls:

Key Products for Remedy are Dampshield and Rainshield.

Definition of Structural Dampness

This refers to the presence of unwanted moisture in the structure of a building, either the result of intrusion from outside or condensation from within the structure. The most damage to paint systems, and eventually to the substrate and the structure, is caused by **excessive** moisture in the walls.

Damp can be of three categories, viz:

- Condensation due to temperature differences between moisture containing air and the building surfaces.
- Rising damp emanates from water in the ground. Rising damp is the common term for the slow upward movement of water in the lower sections of walls and other ground-supported structures by capillary action. The height of the rise is rarely above 1.5m.
- Penetrating damp is caused by rain and is also known as descending damp and lateral damp.

Prior to painting, the building needs to be inspected for all signs of dampness. Telltale signs of dampness are the deposition of salts on the surface, flaking paint, water staining and discolouration.

Pigments used in Dulux premium quality exterior coatings are chemically stable and UV stable under "normal" conditions i.e. moisture levels below 12%. The pigments used have the highest rating resistance to acid and alkali but at high moisture levels, soluble salts from the plaster composition and elsewhere are transported through the coating by the moisture and deposited on the coating surface. The result is discolouration of the surface of the paint and sometimes deterioration of plaster.

Prior to painting, it is essential that causes of dampness are established and cured. A damp proofing specialist or plumber should be consulted if necessary for rectification using appropriate water drainage and plumbing methods.

Nb. The Dulux Quality Guarantee excludes damage to coating systems arising from dampness and moisture ingress.

Remedy: Rising dampness in solid walls

This occurs where plaster has been continued below DPC level, or in the absence of adequate DPC protection. On walls containing up to 50% moisture, apply FIXIT DAMPSHIELD from the ground up to 1.5m, as an apron around the wall. Ensure application and preparation is in accordance with specification. Note that FIXIT DAMPSHIELD is a moisture barrier and as such will not cure the source of the moisture, but merely remedy the effects.

Remedy: Dampness in boundary walls, earth-retaining walls and any free-standing structure

For retaining walls, apply one coat of FIXIT DAMPSHIELD and two coats of DULUX RAINSHIELD FIBRE

DULUX SPECIFICATIONS

CORAL GROVE

REINFORCED WATERPROOFER on the earth retaining face of the wall. Allow to dry for a week before commencing with the earth piling. In the case of boundary or freestanding walls or parapet walls, the tops should be sealed with DULUX RAINSHIELD FIBRE REINFORCED WATERPROOFER, applied to achieve a waterproofing film thickness of 100 microns (at least two full coats). The waterproofing system should be taken up, over, and down the walls and extended at least 25mm down the sides. To prevent capillary action (water cohesion) the waterproofing system must be worked well into the substrate.

Remedy: Areas prone to penetrating damp

Repair and seal any area of water ingress from roofs, balconies, horizontal or sloping wall tops, joints between windows and plaster reveals, etc. with DULUX RAINSHIELD FIBRE REINFORCED WATERPROOFER, applied to achieve a waterproofing film thickness of 100 microns (at least 2 full coats).

Remedy: Efflorescence and lime bloom as a result of excessive moisture

These are a result of water within the structure, dissolving salts and lime, then evaporating and leaving a white deposit on the surface. It should be brushed down and wiped with a dampened (not wet) sponge. The brushing/wiping must be repeated as often as the deposits appear. Painting must not commence until efflorescence has ceased.

1.2 Defects and Cracks in Plaster and Concrete

Cracking

Cracking in walls can have numerous causes, but one of the main causes is the settlement of the building in combination with inferior plaster mix, and the presence of moisture and dampness. It is important to assess the cracking and ensure that it is not interfering with the structure of the building.

Remedy: Hair cracks (-0.2mm)

Remove dust and debris. Apply FIXIT MULTI PURPOSE EXTERIOR CRACKFILLER with a filling knife. Work the filler into the crack, leave to dry and sand to a smooth surface.

On interior surfaces, use FIXIT INTERIOR CRACKFILLER. Allow to dry and sand to a smooth surface.

Remedy: Medium plaster cracks (+0.2mm and -2mm)

Rake out with a scraper blade. Treat fungal growth with either 4:1 water/HTH (chlorine), or 4:1 water/JIK (sodium hypochlorite). Rinse thoroughly with water and allow drying. Remove dust and debris. Apply FIXIT MULTI PURPOSE EXTERIOR CRACKFILLER with a filling knife and smooth off with a wet knife.

On interior surfaces, use FIXIT INTERIOR CRACKFILLER. Allow to dry and sand to a smooth surface.

Remedy: Extensive map-crazed cracks

Open and clean all cracks wider than 2mm according to instructions above (medium cracks). After all cracks have been opened and cleaned, coat the entire surface from corner to corner with FIXIT SMOOTHOVER SKIMMING PLASTER. Apply with a wet plastering trowel, or skimming tool. The product can be sanded, using water

DULUX SPECIFICATIONS

CORAL GROVE

sandpaper and water.

On exterior, textured wall surfaces, DULUX RAINSHIELD FIBRE REINFORCED WATERPROOFER may be applied from corner to corner in strict accordance with application instructions.

Remedy: Large structural cracks (+2mm), holes and corner cracks

Open out with a disc grinder in a V-shape to 3mm or larger. Cut on both sides of the wall. Treat fungal growth with either 4:1 water/HTH (chlorine), or 4:1 water/JIK (sodium hypochlorite). Rinse thoroughly with water and allow drying. Apply FIXIT FLEXIBLE GAP ACRYLIC FILLER in strict accordance with application instructions. It may be necessary to build-up the necessary film thickness with more than one application, as the product may shrink in larger cracks.

Remedy: Movement/Expansion joints

Remove the defective existing sealant and clean out thoroughly. Ensure the joint is cut through the plaster into the brick. This will prevent the plaster from cracking next to the actual joint. Insert backing cord on both sides of the wall and fill with FIXIT MULTI PURPOSE HEAVY DUTY CRACK FILLER with a putty knife or small trowel, forcing the paste well into the backing cord and gaps. Where necessary, create an expansion joint in a V-shape to 3mm or larger. Use a disc grinder and cut on both sides of the wall. Follow instruction for cleaning and filling with backing cord and FIXIT MULTI PURPOSE HEAVY DUTY CRACK FILLER.

Remedy: Friable plaster and mortar

Plaster of which the adhesion is suspect must be removed down to sound brickwork, and re-plastered to match existing.

Mortar pointing in brickwork that is soft and friable, must be scraped out between the bricks and re-applied with a 1:3 cement/sand mortar.

Remedy: Concrete spalling (carbonating) occurs when the reinforcing steel in concrete corrodes. The corrosion is caused by the ingress of salt and carbon dioxide into the concrete. When steel corrodes, the rust has a larger volume than the original steel and this expansion breaks the surrounding concrete. Concrete where spalling (carbonating) occurs must be chipped away and removed. Prepare damaged and rusted steel reinforcing by cleaning away all corrosion down to bright, shiny metal. Paint with a corrosion resistant paint system. Inadequate cleaning, repair and painting, may lead to further contamination of the concrete. Ensure that all concrete areas with a negative pH (less than 12) are removed and repaired. Re-instate with a lightweight cement mix, or a patching plaster, or apply FIXIT EXPANDING FOAM, in strict accordance with application instructions.

Remedy: Mapping/repair witnesses / Rough, uneven plaster

Apply FIXIT SMOOTHOVER SKIMMING PLASTER with a wet plastering trowel or skimming tool. The product can be sanded, using water sandpaper and water. It may be necessary to build-up the required film thickness with more than one application.

DULUX SPECIFICATIONS

CORAL GROVE

2. PREPARATION AND PRIMING

2.1 Cleaning

Dirt, dust, loose/flaking paint and chalk must be removed before painting. Chalk is loose white powder from previous coating. It is easily detected by rubbing the surface with a black cloth.

Exterior

To remove flaking paint, chalkiness, as well as dirt and debris, clean exterior walls by high-pressure water blast, using a rotating nozzle at a pressure of 100 to 120 bars. Remove any remaining loose, flaking paint from the surface with a sharp paint scraper and firm hand pressure. It is not necessary to remove well-bonded layers of paint. Crosshatch tests should be done on areas where the adhesion of paint is suspect. Feather edges of tightly bonded paint with rough to medium grit paper to smooth them off and provide an even surface without repair witnesses. **N.B.** For chalked paint that cannot be removed by washing, DULUX TRADE BONDING LIQUID may be applied to penetrate and bond the surface.

Interior

Wash interior wall surfaces with a solution of SUGAR SOAP. This will ensure that any dirt and grease on the surface, as well as chalked paint, has been removed. Rinse thoroughly with clean water.

Enamel surfaces to be over-coated with water-based paints: To aid adhesion, sand to a matt finish and apply DULUX UNDERCOAT FOR ALL SURFACES.

Fungal growth (lichen and algae)

Scrub with one of the following solutions: either 4:1 water/HTH (chlorine), or 4:1 water/JIK (sodium hypochlorite). Ensure that the areas are completely saturated, and allow the solution to react for a minimum of four (4) hours. In some instances, the fungi or algae may have to be wire brushed to open the spores and to aid the solution penetrating the pores and killing the fungi. Rinse the complete wall surface thoroughly with clean water.

Pre-cast concrete

Acid etch the surface with a solution of hydrochloric acid to remove laitance, uncured cement, etc. as follows: use one (1) volume hydrochloric acid to two (2) volumes water. Alternatively, use a cleaner such as mortar lift. More than one application may be necessary to achieve a paintable surface. **N.B.** Hydrochloric acid is corrosive - please wear protective clothing, gloves, masks and eye goggles against splashes. Allow the acid solution to react for 15 minutes and then wash away all acid with copious amounts of clean water. Remove excess water and allow thorough drying

N.B. When in close proximity to the ocean, it is important to ensure that surfaces are free of contaminants, specifically salt deposits, before painting can commence. Inter-coat washing is therefore essential.

DULUX SPECIFICATIONS

CORAL GROVE

2.2 The Correct Use of Primers

The correct primer should always be applied to a new substrate to ensure that it is sealed and to ensure coating adhesion. Substituting the primer with a non-primer, or an economical contractor's PVA may compromise the coating system, as the system is only as strong as its weakest link. The PVA may not perform adequately as a primer because alkali attack or any moisture in the structure can weaken it, resulting in loss of adhesion and failure of the entire coating system.

Primers for Cement and Gypsum (Rhinolite) Plaster

DULUX PRIMER FOR NEW PLASTER is recommended as a primer for smooth interior plaster surfaces, new and exposed ceiling boards, as well as new and exposed Rhinolite (2-coat plaster). Surfaces must be allowed to dry out thoroughly – no more than 12% moisture content.

DULUX PRIMER FOR NEW PLASTER is also the recommended primer/sealer for all areas where crackfiller has been applied. Crack filler is porous and if left unsealed, it will absorb binder from the topcoats, resulting in dull patches.

DULUX TRADE PLASTER PRIMER – MOISTURE TOLERANT may be used as an early primer for newly plastered walls, as it tolerates moisture of up to 30%. It protects topcoats from alkali attack and efflorescence.

DULUX TRADE FILLERCOAT is recommended as an alternative plaster primer on rough wood-floated exterior plaster, applied unthinned to the total wall surface. DULUX TRADE FILLERCOAT is alkali resistant and has a high film build with excellent filling properties, ensuring a firm base and smooth surface for high quality final coats.

DULUX TRADE ECOSURE WATER-BASED PLASTER PRIMER is an environmentally friendly primer for use on new dry interior and exterior porous surfaces such as gypsum plaster, brick, concrete, cement, and all types of composition boarding.

A minimum of two finishing coats to be applied on all surfaces.

2.3 Touching up of Painted Surfaces

In the manufacture of coloured paint, every effort is made to control the colour consistency between batches so that there are no perceptible differences. However, it is good practice to use cans from the same batch to eliminate any differences.

Touching-up must always be done from corner to corner and from top to bottom.* This is particularly pertinent in exterior products that are older than two years where use of the original colour paint for touch-ups may show colour differences.

DULUX SPECIFICATIONS

CORAL GROVE

Exterior

If painting from corner to corner is not done, the following problems may result:

- Where newly painted walls have been damaged, the same principle applies as for the redecoration of existing surfaces: Where touch-ups are done on a wall, there will be a colour difference due to the extra depth of colour on that one spot.
- The touched-up patch will also stand slightly proud on the walls, which will result in an uneven appearance. Furthermore, light reflection on uneven surfaces will result in sheen differences.
- Touch-ups and patching are usually done with a brush and these brush marks will contribute to the difference in appearance, against a background where a roller was previously used.
- The effect of touch-ups and spot-patching will be made worse in cases where a crack filler has been used on damaged areas – touching up/patching without a sealer/primer will result in a dull, rough appearance where the crack filler has absorbed the binder in the topcoat.

Interior

- Touch-ups and patching are usually done with a brush and these brush marks will contribute to the difference in appearance, against a background where a roller was previously used.
- The effect of touch-ups and spot-patching will be made worse in cases where a crack filler has been used on damaged areas – touching up/patching without a sealer/primer will result in a dull, rough appearance where the crack filler has absorbed the binder in the topcoat.
- To avoid an effect known as picture framing, cutting of corners and edges should always be followed by rolling.

Please bear in mind that the appearance of a colour can depend on the type of lighting. Therefore, check the colour in actual lighting conditions that will be used.

N.B. If repainting from corner to corner is not a viable option, we recommend that the Paint Distributor eye-match the existing colour on the walls. A better colour match will be achieved if paint from the same batch is tinted and boxed. Please bear in mind that the appearance of a colour can depend on the type of lighting. Therefore, check the colour in the actual lighting conditions that will be used.

3. GENERAL PRECAUTIONS AND ADDITIONAL INFORMATION

- Colour references are as accurate as printing will allow. Please refer to the in-store stripe cards/standard card, or on-shelf colour displays for an accurate representation of the colour. Among others, the following factors may affect final colour appearance: product sheen and texture, colour and light reflections, application, surface texture

DULUX SPECIFICATIONS

CORAL GROVE

and preparation. A wet sample applied to the wall that will be painted, will show the true colour of the final finish.

- For best colour and sheen consistency, it is advisable to use containers of the same batch number, or to mix different batches together in a large container, or to finish in a corner before starting a new container.
- Before using any product, read the packaging. Note any special warnings or specialist applications needed.
- For detailed safety information, refer to Material Safety Data Sheets.
- Keep all paint products out of reach of children and animals.
- Ensure good ventilation during application and drying.
- When using solvent-based paints, respiratory protection must be worn.
- Do not smoke, eat or drink whilst handling.
- Do not apply during cold, very hot or wet weather – surface temperatures should be between 10 and 35°C.
- Adhere to preparation and application instructions contained in Dulux Technical Data Sheets.
- All products should be stored in a cool, dry, and well ventilated space. Flammable products should be kept away from heat sources, direct sunlight and open flames. Always check warnings on packs.

For safe disposal instructions, refer to Material Safety Data Sheet.

4. BASIC FIRST AID

First Aid should only be administered by a trained individual.

Inhalation. Move to fresh air, keep the patient warm and still. If breathing becomes irregular or stops, administer artificial respiration.

Eye contact. Wash with clean, fresh water for several minutes, holding eyelids apart. Remove any glasses or contact lenses.

Skin contact. Remove contaminated clothing, wash skin thoroughly with water and soap. Do not use solvents or thinners.

Ingestion. If any products are accidentally swallowed, do not induce vomiting. Keep the patient at rest and seek immediate medical attention.

Always seek medical attention if in doubt or if symptoms persist.

5. LEAD FREE

All Dulux products are lead free. However, surfaces that have been repainted or older surfaces may contain lead. Special precautions should be taken during surface preparation of old painted surfaces. For further advice, please contact the Dulux Technical Advice Centre

FIXIT™ MULTI PURPOSE – FILL & REPAIR EXTERIOR AND INTERIOR SURFACES

DULUX SPECIFICATIONS

CORAL GROVE

Fixit™ SmoothOver™ – Exterior & Interior: *Gives a smooth and even finish to rough & uneven plaster*

Multi Purpose Crackfiller – *For almost every filling job*

Multi Purpose Crackfiller Ready Mixed – *Ready mixed for almost every filling job*

Expanding Foam – *Repair deep gaps & awkward holes*

Quick Set Cement – Interior & Exterior – *Rock hard in 10 minutes, ideal for setting bolts & brackets & even sets underwater*

FIXIT™ INTERIOR – CLEVER FILLING SOLUTIONS TO INTERIOR SURFACES

Interior Crackfiller – *For almost every other interior filling job*

Quick Drying Crackfiller – *Get ready to decorate in 10 minutes*

One Fill Large Gap Filler – *The ultimate light wight filler for holes up to 50mm*

Flexible Gap Acrylic Filler – Crackfiller – *Fill gaps between areas where movement can occur*

Stick it – Crackfiller Stick – *Effortlessly fill hairline cracks without tools*

Plug It – Anchoring Epoxy – *Re-anchor wall fixture without wall plugs*

FIXIT™ STRIPPERS – STRIPS ALKYDS, ENAMELS & VARNISHES FROM WOOD, MASONRY AND METAL SURFACES

Less Mess Paint Stripper – *A revolutionary way to strip paint effectively. The stripped paint forms a dry crust, ready to be brushed off easily. No scraping required.*

Double Strength Paint Remover – *Quickly strip multiple layers of paint.*

FIXIT™ CLEANERS – CLEAN AND DEGREASE SURFACES BEFORE PAINTING

Brush Cleaner Degreaser – *Clean brushes and other paint accessories, also great for removing oil spills from garage floors.*

Decorator's Cleaner - Sugar Soap (Powder & Trigger Spray ready mixed) – *Clean and degrease surfaces prior to painting for better adhesion.*

FIXIT™ DAMP – PREVENTS DAMP FROM SHOWING THROUGH

DampShield – *Seals patches of rising and penetrating damp on exterior and interior walls. Revolutionary water-based technology is low odour, quick drying and easy to clean up.*

DULUX SPECIFICATIONS

CORAL GROVE

GUARANTEES AND CONDITIONS

The Contractor undertakes to perform all workmanship in accordance with accepted norms and procedures as determined by the Master Builders Association and according to the intent, meaning and purpose of this specification as authorized by Dulux.

The Contractor shall include all required labour and materials in his quotation whether or not explicitly referred to herein, provided some may reasonably be inferred to be included in the contract. All workmanship is to be executed according to the best practices to the entire satisfaction of the client or authorised agent.

The Contractor shall indemnify Dulux from any claim capable of being made against him under either statute or common law in respect of damage to any person or property arising out of the execution of the contract. The Contractor must acquaint himself with any limitations or restrictions which may be imposed by the local or other authorities in regard to local authority law and requirements, labour law and requirements for safety regulations, access to site, transport of materials to and from the site as well as allow for any additional expenses involved thereby.

The Contractor shall inspect all surfaces referred to in this specification, before the commencement of work and notify Dulux of problem areas that could adversely affect the quality of all finishes specified herein.

All surfaces to be coated must be thoroughly cleaned and any irregularities in the substrate are to be made good to achieve normal, sound substrate conditions. All areas adjacent to those being coated shall be masked and protected against paint splashes, blemishes and damage.

The Contractor must establish the colour requirements of the owner. If requested The Contractor will, at no extra cost, provide "brush outs" of sample colours on site for approval by the owner and must obtain detailed explanation and directions, on site, of a general colour scheme to be provided, before commencement of work. All colours must be Dulux Standard. The Contractor must retain sufficient paint of the same batch for repainting from corner to corner in order to prevent colour variations.

The spreading rate per square metre per litre is approximate only as it may be influenced by profile, textured or porous surfaces, and application method.

In all cases, Dulux recommended cleaning; priming and subsequent coats must be used and applied in strict accordance with the specification, at the recommended practical spreading rate. Adulteration or thinning of material is not permitted unless recommended by Dulux.

Prior to painting, the Contractor must ensure that all causes of water ingress, roof leaks, rising dampness or any water within the structure such as blocked or rusted pipes have been established and repaired in accordance with approved damp proofing methods.

The Contractor must ensure that all plaster, cement renderings, concrete, brickwork and other masonry surfaces are prepared by either scraping, abrading with a stiff fibre brush or high pressure cleaning so as to remove hard cement splashes, all surface contamination and loose particles.

All minor cracks and surface defects on interior and exterior surfaces are to be raked out,

DULUX SPECIFICATIONS

CORAL GROVE

primed and made good. Efflorescence is to be removed as and when it appears, until such action ceases. Surfaces must be dry and clean before commencement of painting.

The Contractor must ensure complete drying in the depth of substrate, before the application of any system. Moisture content should not exceed 12%.

The Contractor shall at his own expense, touch up where necessary and make good any damage to the structure, fittings or decorations, resulting from his operations.

The Contractor shall clear the site of rubbish, as and when it accumulates. The Contractor shall also clean all floors; paving; brick or stone facings; windows; flushing tanks and taps; all gutters; down pipes and gullies as well as grease and oil leaks. The site as a whole shall be left in a clean and respectable manner, fit for occupation.

Dulux paint systems are guaranteed to perform within specification as per the relevant technical data bulletins. Dulux guarantees the paint systems on exterior walls for a period not longer than 5 years. Within the first two years under normal exposure conditions and appropriate application, there will be minimal visible degradation in quality and performance of the system.

A product guarantee by Dulux will not apply to a failure of the specified Dulux paint system that is caused by or attributable to any of the following: Acts of God or terror such as fire; abnormal climatic or weather conditions; mechanical damage; normal wear and tear; leaks; rising damp or any dampness in the structure; any damage due to water; defective building practices or materials; structural cracks. Freestanding structures, wood and steel trim, and structural steel in direct contact with plaster is specifically excluded from any guarantee.

Whereas Dulux cannot be held responsible for the workmanship in surface preparation and application of our products, it is understood that The Contractor will guarantee such workmanship and application.

Colourfastness: some colours are more durable than others - on exterior products a fade rate of up to 20% year on year is regarded as normal wear and tear.

Certain bright or ultra-deep (base 6) colours often present poor ability to cover, hence requiring numerous coats to obliterate the substrate. We recommend that the first finishing coat be tinted from a base 9 to a colour corresponding to the colour of the topcoat. This will reduce the number of topcoats required for full hiding.

This document and any accompanying attachments may contain confidential and proprietary information. This information is private and protected by law and, accordingly, we give notice that any disclosure, copying, distribution of, or taking any action based on this information is prohibited. This document, the information, including all attachments remains the intellectual property of ICI Dulux (Pty) Limited and may not be distributed or copied in any form without the prior written consent of ICI Dulux (Pty) Limited.

ICI *Dulux* (Pty) Limited