



**MILNERTON RACECOURSE
ENVIRONMENTAL MANAGEMENT SYSTEM
MONTHLY REPORT**

Report number 83 for the period 22 August – 30 September 2014

CONTENTS

1	FIELDWORK/CONTRACTS	1
2	INVASIVE VEGETATION MANAGEMENT	1
3	FIRE MANAGEMENT	1
4	REHABILITATION	1
5	INFRASTRUCTURE MANAGEMENT	2
6	FAUNA MANAGEMENT AND OBSERVATIONS	2
7.1	BIOPHYSICAL MONITORING - VEGETATION	2
7.2	BIOPHYSICAL MONITORING - WATER	3
8	ENVIRONMENTAL EDUCATION AND OUTREACH	3
9	GENERAL INFORMATION/OBSERVATIONS/MEETINGS	3
10	ITEMS TO BE ADDRESSED IN THE UPCOMING MONTHS	4



1. FIELDWORK/CONTRACTS

- **Invasive vegetation clearing** was undertaken on 12, 19, 22, 23 and 30 September
- **Firebreak maintenance** was undertaken on 1 September
- **Monitoring of red list plant species** was undertaken on 11, 15, 19 and 22 September

2. INVASIVE VEGETATION MANAGEMENT

- **Vicia weeds** in the Northern and the Southern Areas were hand-pulled on 12, 19, 22, 23 and 30 September.

3. FIRE MANAGEMENT

- **Typha capensis reeds** that were touching the electric fence on the boundary between the Northern Area and Sandown Crescent were cut on 1 September.

4. REHABILITATION

- Nothing to report.

5. INFRASTRUCTURE MANAGEMENT

- **Storm-water outlets** are open and functioning.

6. FAUNA MANAGEMENT AND OBSERVATIONS

- **A member of the Lepidopterists' Society of Southern Africa**, Fanie Rautenbach, visited Milnerton Racecourse on Sunday, 21 September. Six species of butterfly were found, including Citrus swallowtail, Common geranium bronze, Silver-bottom brown, Common hottentot, African clouded yellow and Water geranium bronze. The latter, *Cacyreus marshalli*, was not recorded at Milnerton Racecourse before and is a new entry on the species list.
- **A monthly avifauna census** was conducted in the Northern and Southern Areas on 15 and 16 September by Helm van Zijl and Harvey Downes of the Cape Bird Club. 21 Species were recorded in the Northern Area and 20 in the Southern Area.
- **The Biodiversity Database** was used to record all fauna and flora sightings of September.
- **Additional fauna observations** of September can be seen below:

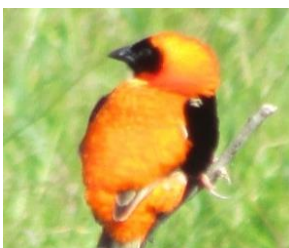


Figure 1: Red Bishop



Figure 2: African Snipe nest



Figure 3: Heady Maiden moths



Figure 1: White-throated Swallows

7.1 BIOPHYSICAL MONITORING – VEGETATION

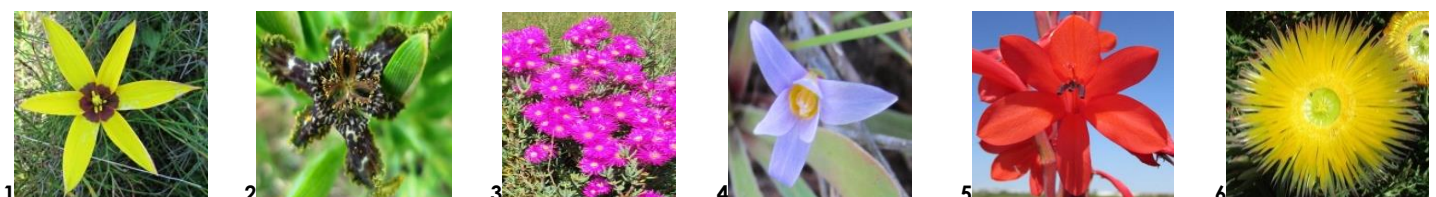


Figure 9: Flora species observed during September are as follows from left to right – 1) *Spiloxene canaliculata* 2) *Ferraria crispa* 3) *Lampranthus amoenus* 4) *Romulea minutiflora* 5) *Watsonia meriana* 6) *Conicosia pugioniformis*



Figure 15: Quarterly fixed point photography, taken on 12 September at Stand 2 in the Northern Area.



Figure 16: Quarterly fixed point photography, taken on 12 September at Stand 1 in the Southern Area.

- **The Custodians of Rare and Endangered Wildflowers (CREW)** visited Milnerton Racecourse on 19 and 22 September. The preliminary results of the visit show that four plant species will be added to reserve's species list. These include *Heliophila pusilla*, *Lotononis involucreta*, *Romulea minutiflora* and *Trifolium angustifolium*. *Phyllis harveyi*, which was previously classified as "extinct from site" was also found. *Phyllis harveyi* is classified as Vulnerable by the International Union for Conservation of Nature (IUCN).
- **Data collection for research on exclusion plots** at Milnerton Racecourse took place on 8 September and will be continued in October. Research is aimed at assessing the effect of Cape Grysbok on post-fire vegetation.

7.2 BIOPHYSICAL MONITORING – WATER



Figure 10: Fixed point photography of the Dam, taken on 12 September 2014.



Figure 11: Fixed point photography of the Wetland 1, taken on 12 September 2014.



Figure 12: Fixed point photography of Wetland 1, taken on 26 September 2011.



Figure 13: Fixed point photography of Wetland 2, taken on 12 September 2014.

Table 1. Monthly rainfall records at Milnerton Racecourse since 2007.

Rainfall Data (mm)													
Year	JAN	FEB	MAR	APR	MAY	JUNE	JULY	AUG	SEP	OCT	NOV	DEC	TOTALS
2007	0	28	20	65	61.5	111	106	102	18	20	34	24	589.5
2008	3	12	7	18	54	107	175	87	160	15	60.5	5	703.5
2009	3	8	0	44	166	81	96.5	80	67	45.5	82	9	682
2010	2.5	5	8.5	7	121	100.5	62	60.5	14.5	30.5	36.5	10.5	459
2011	13	5.5	5.5	30	47	55	70	101	42	20	31	32.5	452.5
2012	5.75	2.5	18	78	61	81.5	111.5	100	60	36	15.5	3	572.75
2013	7.5	41	26.5	48.5	41.5	148	74	232	64	3	89	2.5	777.5
2014	24.5	4.9	50	33	65.4	167.5	81.9	85	18				

Table 2. Monthly records of water-levels, measured at the calibrated measuring points in Wetland 1 and 2.

Mnth	Wetland 1 - Southern Area (cm)								Mnth	Wetland 2 - Northern Area (cm)							
	2007	2008	2009	2010	2011	2012	2013	2014		2007	2008	2009	2010	2011	2012	2013	2014
Jan		114	76	67	18	0	23	91	Jan		31	34	47.5	29	10	11	51
Feb		61	46	44.2	0.5	0	10	38	Feb		1	12	29	1.5	0	0	18
Mar		53	28	25	0	0	0	31	Mar		0	0	13	0	0	0	0
Apr		35	18	13	0	0	0	17	Apr		0	5	3	0	9	0	15
May		22	37	35.6	0	0	0	20.5	May		1	33	46.6	4	31.6	4.3	24.5
Jun		59	69	70	14	26	56	45	Jun		51	62	71.8	43	61	67.5	48
Jul	123	153	143	35.6	61	96	86	117	Jul	82	94	102	46.6	50.2	91	85.5	86.5
Aug	150+	155	145	123.6	57	133	150+	150+	Aug	101	95.5	107	105	75.5	100	150+	103
Sep	150+	187	161.5	112.5	71	127	150+	150+	Sep	97	101.5	150+	93	75	96.5	97	120
Oct	150+	160.5	143.5	95.5	59.5	117	150+		Oct	83	91.5	150+	84	67.2	94.5	91	
Nov	150+	139.5	138	75.5	48	86	150+		Nov	68	77	92	71	61	73	92	
Dec	135	108	91	46.75	24	70	104		Dec	52	58.5	69	45	43.5	61	75	

8. ENVIRONMENTAL EDUCATION AND OUTREACH

- **Guided spring walks** were held at Milnerton Racecourse between 14 and 25 September. The informative walks are led by the Site Manager and were attended by 84 people in total so far. Below are some of the visitors enjoying the walks through the 'little gem'.



9 GENERAL INFORMATION / OBSERVATIONS / MEETINGS

- **Correction:** The identification of Figure 9, Photo 4, in the EMS report of August 2014 is not *Corycium orobanchoides*. The correct identification is *Lachenalia pallida*.

10 ITEMS TO BE ADDRESSED IN THE UPCOMING MONTHS

- Fauna Management Procedures Manual - in progress
- Monitoring of Red Data plant species – in progress
- Data collection for research on exclusion plots – in progress
- Spring Walk – 3 October 2014
- Cape Nature permit application and construction of walk-in traps – October 2014
- Huis Magdalena visit – October 2014
- SA Spider Club visit – Summer 2014/2015
- Addition of law enforcement section to management plan – 2014



Produced in partnership with:

