

**MILNERTON RACECOURSE**  
ENVIRONMENTAL MANAGEMENT  
SYSTEM  
MONTHLY REPORT  
MAY 2014  
COMPILED BY: LANDI LOUW  
SITE MANAGER



Report number 79 for the period 24 April 2014 – 26 May 2014

## 1 FIELD WORK / CONTRACTS

- **Spraying of Kikuyu: 30 April, 2 and 6 May**
- **Infrastructure maintenance: 2 and 20 May**

## 2 INVASIVE VEGETATION MANAGEMENT

**Herbicide spraying of Kikuyu grass** was done in the Northern Area by two volunteers from UNISA. Spraying in the Northern Area was completed on 2 May and spraying in the Southern Area was completed on 6 May. City of Cape Town staff also assisted Kenilworth Racing with the spraying of areas on 6 May.

## 3 FIRE MANAGEMENT

Nothing to report.

## 4 REHABILITATION

Nothing to report.

## 5 INFRASTRUCTURE MANAGEMENT

**The two old boreholes in the Northern Area** were sealed with eco-insulation and cement on 2 May in order to prevent fauna from falling down it and being trapped inside.

**The tourism signage application** was reviewed during March. The application was unsuccessful. The Site Manager is still waiting for the report from the consultants.

**The “no-cycling” pictogram** was placed over the “no-dumping” pictogram on the reserve sign in the Northern Area on 20 May. The old “no-cycling” sign on the gate was removed.

**Stormwater outlets** are all open and functioning.



Figure 1: The sign in the Northern Area with the new pictogram.



Figure 2: One of the old boreholes which is now closed.

## 6 FAUNA MANAGEMENT AND OBSERVATIONS

**A suitable donor site for Cape Grysbok** has not yet been found. The Site Manager had a meeting with the CEO of the Home Owner's Association at the Atlantic Beach Golf Estate. The Site Manager emailed photographs of the vegetation in which the Cape Grysbok occur at the Estate to the Veterinary and Biodiversity Coordinator of the Biodiversity Branch. The Site Manager is still awaiting feedback from the Fauna Management Committee.

**Artificial refugia** to collect baseline data on reptile species at Milnerton Racecourse were placed in the Northern and Southern Areas on 3 April. The sheets were checked and removed from the field on 6 May. One adult Mole Snake was found. The sheets will be placed back in the field in September.

**A nocturnal survey** was done on 26 May. Two Black-winged Stilts were seen in the Northern Area. Blacksmith Lapwings and Spotted Thick-knees were sighted in the Southern Area. Clicking Stream frogs were heard in the Southern and the Northern Area.

**A monthly avifauna census** was conducted on 19 and 20 May by Helm van Zijl in the Northern and Southern Areas. 15 Species were recorded in the Northern Area and 20 in the Southern Area.

**A project proposal on "The assessment of the habitat suitability of Milnerton Racecourse for the introduction of *Cacosternum capense*"** has been handed in to UNISA by the Site Manager. The proposal will be reviewed by the university in August.

**The Biodiversity Database** was used to record all fauna and flora sightings for May.

**Additional fauna observations** for May can be seen below:



Figure 3: Blacksmith Lapwing egg



Figure 4: Painted Lady



Figure 5: Unidentified moth/butterfly



Figure 6: Southern Masked Weaver

## 7.1 BIOPHYSICAL MONITORING – VEGETATION



1



2



3



4



5



6

Figure 7: Flora species observed during May are as follows from left to right – 1) *Lachenalia rubida* 2) *Oxalis* sp. 3) *Pelargonium myrrhifolium* 4) *Carpobrotus edulis* 5) *Metalsia muricata* 6) *Oxalis pes-caprae*

## 7.2 BIOPHYSICAL MONITORING – WATER



Figure 8: Fixed point photography of Wetland 1, taken on 22 May.



Figure 9: Fixed point photography of Wetland 2, taken on 22 May.

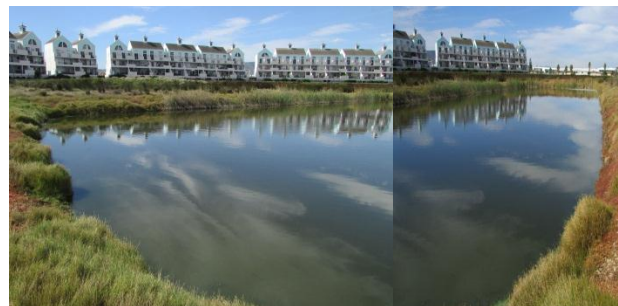


Figure 10: Fixed point photography of the Dam, taken on 22 May.

Mnth	Wetland 1 - Southern Area( cm)								Mnth	Wetland 2 - Northern Area (cm)							
	2007	2008	2009	2010	2011	2012	2013	2014		2007	2008	2009	2010	2011	2012	2013	2014
Jan		114	76	67	18	0	23	91	Jan		31	34	47.5	29	10	11	51
Feb		61	46	44.2	0.5	0	10	38	Feb		1	12	29	1.5	0	0	18
Mar		53	28	25	0	0	0	31	Mar		0	0	13	0	0	0	0
Apr		35	18	13	0	0	0	17	Apr		0	5	3	0	9	0	15
May		22	37	35.6	0	0	0	20.5	May		1	33	46.6	4	31.6	4.3	24.5
Jun		59	69	70	14	26	56		Jun		51	62	71.8	43	61	67.5	
Jul	123	153	143	35.6	61	96	86		Jul	82	94	102	46.6	50.2	91	85.5	
Aug	150+	155	145	123.6	57	133	150+		Aug	101	95.5	107	105	75.5	100	150+	
Sep	150+	187	161.5	112.5	71	127	150+		Sep	97	101.5	150+	93	75	96.5	97	
Oct	150+	160.5	143.5	95.5	59.5	117	150+		Oct	83	91.5	150+	84	67.2	94.5	91	
Nov	150+	139.5	138	75.5	48	86	150+		Nov	68	77	92	71	61	73	92	
Dec	135	108	91	46.75	24	70	104		Dec	52	58.5	69	45	43.5	61	75	

Table 1. Monthly records for water-levels, measured at the calibrated measuring points in Wetland 1 and 2.

Rainfall Data (mm)													
Year	JAN	FEB	MAR	APR	MAY	JUNE	JULY	AUG	SEP	OCT	NOV	DEC	TOTALS
2007	0	28	20	65	61.5	111	106	102	18	20	34	24	589.5
2008	3	12	7	18	54	107	175	87	160	15	60.5	5	703.5
2009	3	8	0	44	166	81	96.5	80	67	45.5	82	9	682
2010	2.5	5	8.5	7	121	100.5	62	60.5	14.5	30.5	36.5	10.5	459
2011	13	5.5	5.5	30	47	55	70	101	42	20	31	32.5	452.5
2012	5.75	2.5	18	78	61	81.5	111.5	100	60	36	15.5	3	572.75
2013	7.5	41	26.5	48.5	41.5	148	74	232	64	3	89	2.5	777.5
2014	24.5	4.9	50	33	65.4								

Table 2. Monthly rainfall records at Milnerton Racecourse since 2007.

## 8. ENVIRONMENTAL EDUCATION AND OUTREACH

Nothing to report.

## 9 GENERAL INFORMATION / OBSERVATIONS / MEETINGS

**A trespasser**, utilizing the informal pathway that leads from the Kenilworth Racing grass track to the path in the Northern Area was confronted on site by the Site Manager on 30 April. Security officials at Kenilworth Racing have informed the man that the possibility of a fine is being discussed.

**Illegal dumping** was found in the Northern Area on 5 May by the Site Manager. The bag that was found contained foamalite strips.

**Pink is the new White: An interesting Quartz rock** was found by the Site Manager in Wetland 2 in the Northern Area on 21 May. According to literature – “quartz is resistant to weather so it will often appear fresh and unaltered. It is usually white to grey, though it can occur in various shades of pink and red due to varying amounts of iron oxide or manganese.”



Figure 6: The trespasser that utilised the Northern Area as a thoroughfare.



Figure 7: Illegal dumping in the Northern Area.



Figure 8: The quartz rock found in the Northern Area.

## 10 ITEMS TO BE ADDRESSED IN THE UPCOMING MONTHS

- Fauna Management Procedures Manual - in progress
- Cape Gysbok Species Management Plan – done
- Placement of “no cycling” pictogram – done
- Update and review the APO – done
- Check and remove artificial refugia – done
- Nocturnal survey – done
- Research on aquatic invertebrates – June 2014
- Frog Survey – June / July 2014
- Environmental Education Holiday Programme – July 2014
- Set-up of trap array – September 2014
- Add law enforcement section to management plan – 2014
- Reserve signage – 2014
- Gysbok introduction – 2014
- Update Maps - 2014



