




Table Bay Nature Reserve - Milnerton Racecourse Section
MONTHLY EMS REPORT

REPORT No.: 62

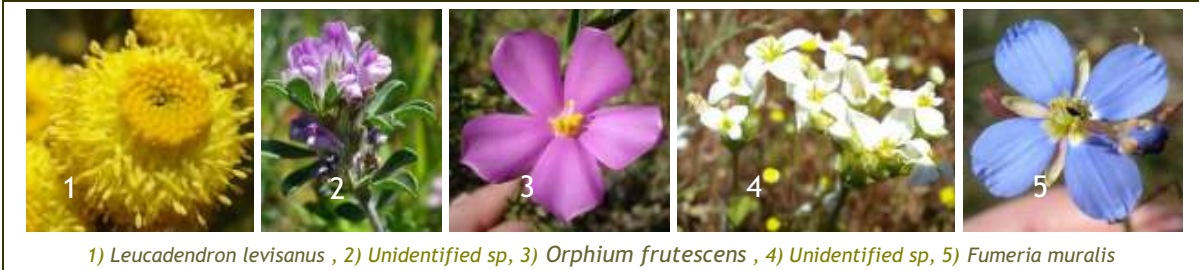
PERIOD: October 2012

DATE: 26 October 2012

FIELD WORK	1
<ul style="list-style-type: none"> ✘ 10th Oct - Path maintenance ✘ 10th Oct- BB3 monitoring ✘ 10th & 17th Oct - Hand pulling of weeds ✘ 13th Oct - Spring walk ✘ 17th Oct - Grysbok drive count 	
INVASIVE VEGETATION MANAGEMENT	2
<ul style="list-style-type: none"> ✘ Follow-up clearing of woody alien species was undertaken in Oct. ✘ Sourcing and costing for kikuyu barrier material is being undertaken by KR. ✘ Handpulling of weeds was undertaken in the northern area on the 10th & 17th Oct. 	
FIRE MANAGEMENT	3
<ul style="list-style-type: none"> ✘ On the 10th Oct Burn Block 3 regrowth was monitored. (See 7. Biological Monitoring, Vegetation). ✘ Data capturing and species identification of Burn block 3 transect monitoring underway. 	
REHABILITATION	4
<ul style="list-style-type: none"> ✘ No rehabilitation undertaken during Oct. 	
INFRASTRUCTURE MANAGEMENT	5
<ul style="list-style-type: none"> ✘ Stormwater outlets: All outlets are open. ✘ Signage & Fences: No issues noted. ✘ Path maintenance: Path maintenance was undertaken on the 10th Oct. ✘ General: Litter cleanup was undertaken in the northern and southern area on 17th Oct. 	
FAUNA MANAGEMENT & OBSERVATIONS	6
<ul style="list-style-type: none"> ✘ Updated domestic animal policy has been uploaded on the website and distributed to Bodies Corporate. ✘ A Grysbok drive count was undertaken in the southern area on the 17th Oct. In total one female and one male was sighted. ✘ During Oct the monthly avifauna count was undertaken by Helm van Zijl in the northern and southern areas. Sightings for Oct still to be uploaded onto the CCT Biodiversity Database by SG. 	
<div style="display: flex; justify-content: space-around; align-items: center;">    </div>	
<div style="display: flex; justify-content: space-around;"> Grysbok Drive count Spotted Thick-knee nest </div>	

Vegetation:

✘ Some species observed during this month in the southern area.



1) *Leucadendron levisanus* , 2) *Unidentified sp*, 3) *Orphium frutescens* , 4) *Unidentified sp*, 5) *Fumeria muralis*

✘ Burn Block 3 regenerating species.



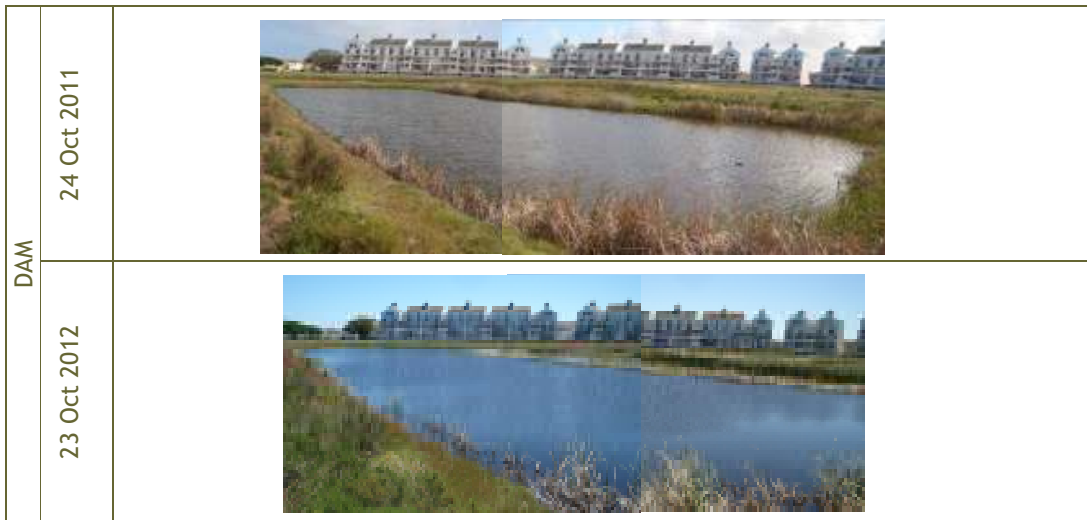
1) *Zantedeschia aethiopica*, 2) *Ursinia anthemoides* 3) *Ursinia anthemoides*, 4) *Senecio arenarius*, 5) *Dimorphotheca pluvialis* , 6) *Albuca canadensis*, 7) *Ornithogalum thyrsoides*, 8) *Pelargonium capitatum*, 9) *Lachenalia contaminata* , 10) *Carpobrotus edulis*, 11) *Carpobrotus acinaciformis*, 12) *Hermannia procumbens procumbens*

✘ Quarterly fixed point vegetation photography to be undertaken in December.

Water:

✘ Monthly fixed point photography of the wetlands.

	24 Oct 2011	23 Oct 2012
WETLAND 1		
WETLAND 2		



Mnth	Wetland 1 - Southern Area (cm)						Wetland 2 - Northern Area (cm)						Rainfall Data (mm)								
	2007	2008	2009	2010	2011	2012	2007	2008	2009	2010	2011	2012	2007	2008	2009	2010	2011	2012			
Jan		114	76	67	18	0		31	34	47.5	29	10		0	3	3	2.5	13	5.75		
Feb		61	46	44.2	0.5	0		1	12	29	1.5	0		28	12	8	5	5.5	2.5		
Mar		53	28	25	0	0		0	0	13	0	0		20	7	0	8.5	5.5	18		
Apr		35	18	13	0	0		0	5	3	0	9		65	18	44	7	30	78		
May		22	37	35.6	0	0		1	33	46.6	4	31.6		61.5	54	166	121	47	61		
Jun		59	69	70	14	26		51	62	71.8	43	61		111	107	81	100.5	55	81.5		
Jul		123	153	143	35.6	61	96		82	94	102	46.6	50.2	91		106	175	96.5	62	70	111.5
Aug		150+	155	145	123.6	57	133		101	95.5	107	105	75.5	100		102	87	80	60.5	101	100
Sep		150+	187	161.5	112.5	71	127		97	101.5	150+	93	75	96.5		18	160	67	14.5	42	60
Oct		150+	160.5	143.5	95.5	59.5	117		83	91.5	150+	84	67.2	94.5		20	15	45.5	30.5	20	35
Nov		150+	139.5	138	75.5	48			68	77	92	71	61			34	60.5	82	36.5	31	
Dec		135	108	91	46.75	24			52	58.5	69	45	43.5			24	5	9	10.5	32.5	

✘ Rain gauge data supplied by Niel van Wyk records 35mm form the 1st - 24th Oct.

ENVIRONMENTAL EDUCATION AND OUTREACH

8

- ✘ The annual Spring Walk was undertaken on the 13th October. Approximately 30 people attended the Fire and Fynbos guided walk. A questionnaire was filled in which revealed the following statistics;
- ✘ 53% of the participants were from Royal Ascot, 17% <10km radius and 30% >10km radius.
 - ✘ Interests were the highest for nature itself then animals, plants and birds.
 - ✘ 53% heard about the walk through a friend, 27% via e-mail & 20% via the local newspapers.
 - ✘ All enjoyed the walk and 94% would visit the northern area on their own accord.
 - ✘ 33% were not aware that fynbos needed fire.
 - ✘ Recommendations were that the walk should start in the southern area and that more walks should be undertaken. More advertising should also be done in Royal Ascot.



GENERAL INFORMATION / OBSERVATIONS / MEETINGS

9

- ✘ On the 12th October SG met with Stacey Lee van Rensburg, Hirsch's PRO to discuss the placement of the water point for the spring walk.
- ✘ On the 23rd Oct KR & SG took Julia Wood, Head of CoCT Biodiversity Management Branch, Adele Pretorius and Erika Foot on a site visit of the northern area as part of the annual review. The following was discussed:
 - ✘ Laterite path should ideally be replaced with a boardwalk;
 - ✘ Julia Wood will provide comment on the Gold Circle Redevelopment as part of future processes;
 - ✘ EE visitor numbers to be included in TBNR stats;
 - ✘ Cat proofing of palisade fencing;
 - ✘ Investigate depth of well holes in northern area and cover to prevent animals from falling in;
 - ✘ Cut *Avena fatua* (Winter grass) seeds off annually.

ITEMS TO BE ADDRESSED IN THE UPCOMING MONTHS

10

Regular monthly / bi-monthly tasks			
✘ Path maintenance & ad hoc alien clearing / litter cleanups		✓	Ongoing
✘ Vegetation & water level monitoring / bird counts			
✘ MRNR EMS update		½	Ongoing
✘ Update flora species list			Ongoing
✘ Path maintenance		✓	Sep/Oct
✘ Hand pulling of weeds in the northern area		✓	Sep/Oct
✘ Grysbok drive count		✓	Oct
✘ Hand pulling of weeds in the southern area		✘	Oct/Nov
✘ Letter to Bodies Corporates urging enforcement of their no pet policies		✓	Oct
✘ Spring walk		✓	13 Oct
✘ Spray kikuyu			Nov - Dec
✘ Kikuyu barrier quote			2012
✘ Grysbok introduction			2012
✘ Road signage			2012/13
✘ Update maps			2012/13
✘ Bird hide structural planning			2012/13