

Table Bay Nature Reserve - Milnerton Racecourse Section
MONTHLY EMS REPORT

REPORT No.: 60

PERIOD: August 2012

DATE: 31 August 2012

CONTRACTS MANAGEMENT

1

- ✘ 29th Aug - Path maintenance, planting & weed clearing (CCT)

INVASIVE VEGETATION MANAGEMENT

2

- ✘ Follow-up clearing of woody alien species will be undertaken in Sep/Oct.
- ✘ Sourcing and costing for kikuyu barrier material is being undertaken by KR. In total a minimum of 170m of barrier material is needed. KR is investigating a rubber matting option.
- ✘ Handpulling of weeds was undertaken in the northern area on the 29th Aug. Species removed were *Vicia* sp, *Fumaria muralis* subsp. *muralis*, *Osteospermum dentatum*, Port Jackson etc.

FIRE MANAGEMENT

3

- ✘ On the 22nd & 28th Aug burn block 3 regrowth was monitored. (See 7. Biological Monitoring, Vegetation).

REHABILITATION

4

- ✘ On the 29th Aug *Disphyma crassifolium* was planting along the path at the northern area entrance.

INFRASTRUCTURE MANAGEMENT

5

- ✘ **Stormwater outlets:** All outlets are open.
- ✘ **Signage & Fences:** See attached signage proposal options. AR erected Gold Circle Do's & Don'ts posters in changing rooms. Gold circle has erected a treated effluent water warning sign.
- ✘ **Path maintenance:** Stakes were placed around stepping stumps for support on the 1st Aug. Path maintenance was undertaken on 29th Aug from the style to the boardwalk.
- ✘ **General:** Graffiti on Stable Yard wall was cemented over on the 30th July. Fine retracted.



FAUNA MANAGEMENT & OBSERVATIONS

6

- ✘ Cat removed from the northern area on the 31st July. Updating of Domestic animal policy underway.
- ✘ During Aug the monthly avifauna count was undertaken by Helm van Zijl in the northern and southern areas. Sightings for Aug to be uploaded onto the CCT Biodiversity Database by SG.
- ✘ On the 25th Aug a Stable Yard resident informed MN that a Yellow Billed duckling was in her garden. NvW collected the duckling and reunited it with its mother & siblings in the northern area.

Vegetation:

✘ Some species observed during this month in the southern area.



1) *CF Romula flava*, 2) *Heliophila scoparia var scoparia*, 3) *CF Fumeria muralis*, 4) *CF Ornithogalum hispidum*, 5) *Wachendorfia paniculata*, 6) *Manulea rubra*, 7) *CF Sparaxis sp*, 8) *Lampranthus reptans*, 9) *CF Acrosanthes sp*, 10) *Dischisma ciliatum*, 11) *Hemimeris racemosa*, 12) *CF Romula obscura*

✘ Burn Block 3 regenerating species.

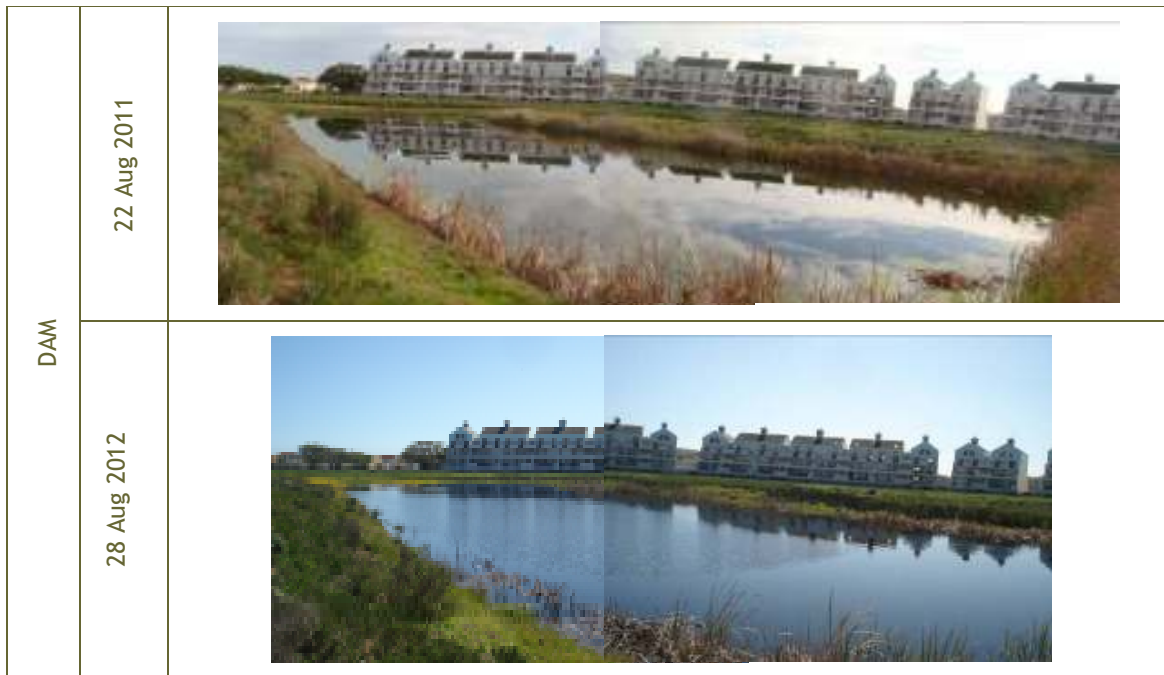


1) *Moraea gawleri*, 2) *Ruschia macowanii*, 3) *Romulea flava var. flava*, 4) *Heliophila africana*, 5) *Romulea rosea var. rosea*, 6) *CF Senecio littoreus*, 7) *Dimorphotheca pluvialis*, 8) *Oxalis obtusa*, 9) *Gladiolus carinatus*, 10) *Lachenalia longibracteata*, 11) *Moraea flaccida*, 12) *Gladiolus gracilis*, 13) *CF Ornithogalum imbricatum*, 14) *Wurmbea stricta*, 15) *CF Erodium moschatum*, 16) *Trachyandra CF tabularis*, 17) *CF Felecia tanella*

✘ Quarterly vegetation fixed point photography to be undertaken in September.

Water:

✘ Monthly fixed point photography of the wetlands.



✘ Southern wetland and dam are overflowing into one another.

✘ Northern wetland is overflowing back up the culvert.

Mnth	Wetland 1 - Southern Area(cm)						Wetland 2 - Northern Area (cm)						Rainfall Data (mm)						
	2007	2008	2009	2010	2011	2012	2007	2008	2009	2010	2011	2012	2007	2008	2009	2010	2011	2012	
Jan		114	76	67	18	0		31	34	47.5	29	10	0	3	3	2.5	13	5.75	
Feb		61	46	44.2	0.5	0		1	12	29	1.5	0	28	12	8	5	5.5	2.5	
Mar		53	28	25	0	0		0	0	13	0	0	20	7	0	8.5	5.5	18	
Apr		35	18	13	0	0		0	5	3	0	9	65	18	44	7	30	78	
May		22	37	35.6	0	0		1	33	46.6	4	31.6	61.5	54	166	121	47	61	
Jun		59	69	70	14	26		51	62	71.8	43	61	111	107	81	100.5	55	83.5	
Jul		123	153	143	35.6	61	96	82	94	102	46.6	50.2	91	106	175	96.5	62	70	111.5
Aug		150+	155	145	123.6	57	133	101	95.5	107	105	75.5	100	102	87	80	60.5	101	94.5
Sep		150+	187	161.5	112.5	71		97	101.5	150+	93	75		18	160	67	14.5	42	
Oct		150+	160.5	143.5	95.5	59.5		83	91.5	150+	84	67.2		20	15	45.5	30.5	20	
Nov		150+	139.5	138	75.5	48		68	77	92	71	61		34	60.5	82	36.5	31	
Dec		135	108	91	46.75	24		52	58.5	69	45	43.5		24	5	9	10.5	32.5	

✘ Rain gauge data supplied by Niel van Wyk records 94.5mm for 1st - 28th Aug.

ENVIRONMENTAL EDUCATION AND OUTREACH

8

Spring walk planning underway.

GENERAL INFORMATION / OBSERVATIONS / MEETINGS

9

- ✘ On behalf of the EMC, SG submitted the following online for the “Have Your Say about the City’s Five Year Plan” on the 31st July. Unique number is: 84918.
 - R27, Racecourse Road and Grand National Boulevard. Please install Reserve road signage to the Milnerton Racecourse Section of the Table Bay Nature Reserve.
 - Table Bay Nature Reserve: Milnerton Racecourse Section. We need Information boards within the Reserve.
 - Table Bay Nature Reserve: Milnerton Racecourse Section. We need environmental education facilities (Bird hide) within the Reserve.
 - Table Bay Nature Reserve: Milnerton Racecourse Section. We need funding for specialist input into animal identification and surveys.
- ✘ On the 8th Aug KR, SG, AR & DD discussed the kikuyu barrier, Sandown Crescent kikuyu in landscaping and signage locations. The outcomes were:
 - A non metal kikuyu barrier can be installed below the horse railings along the northern area boundary bordering onto the grass track. Rubber matting and damp proof were mentioned as possible options. KR is costing rubber matting as some is available at Rietvlei already. Barrier cannot be installed on a Tuesday or Friday before 10:30am.
 - DD agreed to herbicide the kikuyu on the boundary of Sandown Crescent and maintain it regularly. SG recommended Focus Ultra.
 - AR & DD agreed with the proposed locations of the signs. Locations proposed were on the palisade fence of Bridle Way and near to the parade ring in burn block 1. AR proposed that one be put at the “corridor” entrance to the southern area.

ITEMS TO BE ADDRESSED IN THE UPCOMING MONTHS

10

Regular monthly / bi-monthly tasks			
✘ Path maintenance & ad hoc alien clearing / litter cleanups		✓	Ongoing
✘ Vegetation & water level monitoring / bird counts			
✘ MRNR EMS update		½	Ongoing
✘ Update flora species list			Ongoing
✘ Path maintenance		✓	Aug
✘ Kikuyu barrier quote		½	Jul
✘ Letter to Bodies Corporates urging enforcement of their no pet policies		½	Jul
✘ Hand pulling of weeds		¼	Aug - Oct
✘ CREW visit			Sep/Oct
✘ Spring walk			Oct
✘ Spray kikuyu			Nov - Dec
✘ Erect/install CCT signboards			2012
✘ Road signage			2012
✘ Bird hide structural planning			2012
✘ Update maps			2012
✘ Grysbok introduction			2012

Formal Do's & Don'ts signage



2. Palisade fence along Bridle Way



Informal descriptive signage



5. 2nd Circle Park

6. Southern gate

7. Right of middle

8. Left of middle



1. Northern entrance



3. Palisade fence in Stable Yard



4. Northern entrance



Grand National Boulevard