

Milnerton Racecourse Conservation Area MONTHLY EMS REPORT

MRNR  EMS
Conservation

REPORT No.: 48

PERIOD: July 2011

DATE: 29 July 2011

CONTRACTS MANAGEMENT

1

- ✘ On the 6th, 14th and 20th July CCT assisted in planting the firebreak *Carpobrotus edulis*.

INVASIVE VEGETATION MANAGEMENT

2

- ✘ No *Persicaria* plants were found in Burn Block 2.
- ✘ On the 18th July follow up clearing of Port Jackson and Rooikraans was undertaken in northern and southern areas. One large Port Jackson at the Parade rings is still to be cut & the stump treated.
- ✘ Kikuyu survey was undertaken on the 30th June. The northern and southern areas account for 1072m² and 200m² respectively. Focus Ultra to be sourced from CCT for eradication of the invasion. KR will be liaising with Louise Stafford.
- ✘ Kikuyu grass between the stile & the boardwalk in the northern area has been treated with herbicide.
- ✘ The installation of & barrier & planting of a *Carpobrotus* buffer zone along the kikuyu grass track may only commence during winter of 2012 due to lack of rain.



FIRE MANAGEMENT

3

- ✘ Monitoring of post fire flora species is underway.
- ✘ 2012 burn application documentation is in hand.

REHABILITATION

4

- ✘ On the 6th, 14th and 20th July CoCT assisted in planting areas of the firebreak bordering onto Stable Yard with *Carpobrotus edulis*. Progress has been slow due to a lack of available labour. Additional contract labour will more than likely be required if the planting is to be completed before the end of the winter season.
- ✘ A flora search and rescue was carried out on the 14th July at the firebreak along The Met. *Zantedeschia aethiopica* (154), *Chrysanthemoides monilifera* (25) and *Trachyandra cf ciliate* (9) were replanted on the peninsula of Rietvlei Wetland Reserve.



INFRASTRUCTURE MANAGEMENT

5

- ✘ **Stormwater outlets:** All outlets are clear of vegetation and open.
- ✘ **Signage & Fences:**
 - All 4 no entry signs along the grass track have been damaged, presumably by the tractor mower. Signage to be replaced.
 - Gold Circle is still to remove concrete railing along the boundary of the southern area.
- ✘ **Path maintenance:**
 - Path maintenance was undertaken on the 18th July.
 - Recent outings to the reserve have highlighted a need to construct a simple bridge crossing across the drainage channel in the southern area to facilitate easy access from the northern to the southern area. Funding for such a project to be sourced.



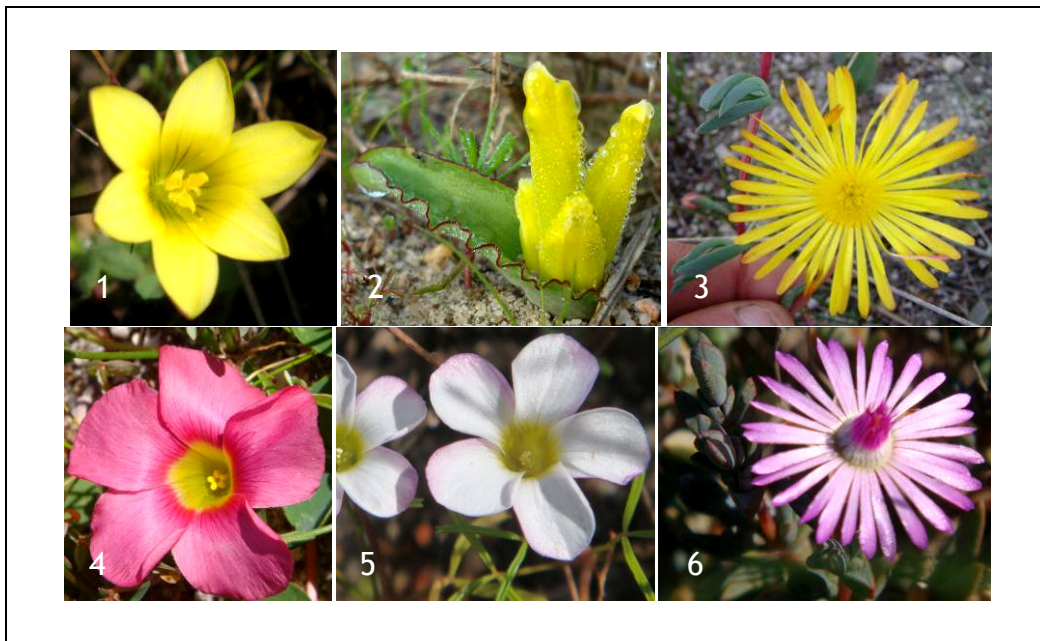
- ✘ During July the monthly avifauna count was undertaken by Helm van Zijl both the northern and southern areas. Sightings for July will be uploaded during August onto the CoCT Biodiversity Database by RM.
- ✘ Surveys will be undertaken on a regular basis to prevent species captured CoCT Biodiversity Database from becoming extinct due to the lack of recorded sightings.
- ✘ A nest of 9 Cape Shoveler eggs was found in the southern area.
- ✘ On the 19th July a Rietvlei student (Tammy) organised a night drive in the southern area of MRNR to determine the population of Cape or Scrub Hare as part of her research project. Two Cape Hares were spotted as well as two Grysbok and one Water Mongoose. These sightings will be uploaded onto the Biodiversity database during August.



BIOLOGICAL MONITORING

Vegetation:

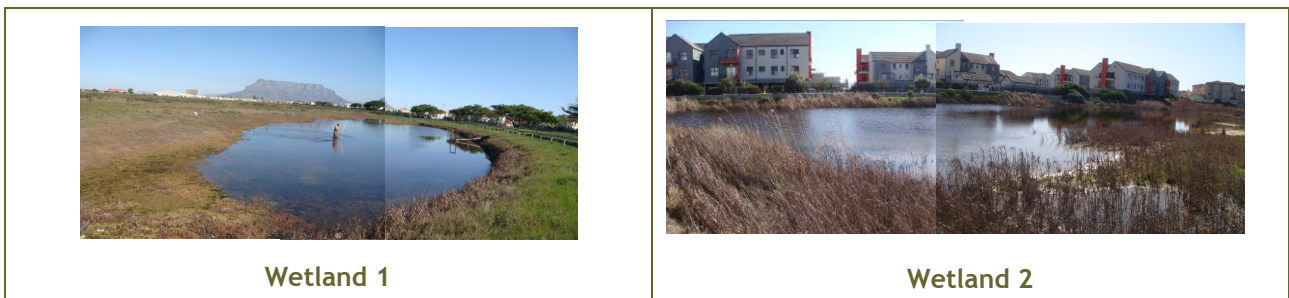
- ✘ **Vegetation:** Some species observed during this month.



1) *Romula sp*, 2) *Lachenalia reflexa*, 3) *Lampranthus sp*, 4) *Oxalis purpurea* 5) *Oxalis sp*, 6) *Lampranthus sp*

Water:

- ✘ Fixed point photography of the wetlands for 20th July 2011.



- ✘ Wetland 1 & 2 are at a higher level than 2010, however, much lower than 2007/8/9.

Measured in cm	Wetland 1 (Southern Conservation Area)					Wetland 2 (Northern Conservation Area)				
	2007	2008	2009	2010	2011	2007	2008	2009	2010	2011
Jan		114	76	67	18		31	34	47.5	29
Feb		61	46	44.2	0.5		1	12	29	1.5
Mar		53	28	25	0		0	0	13	0
Apr		35	18	13	0		0	5	3	0
May		22	37	35.6	0		1	33	46.6	4
Jun		59	69	70	14		51	62	71.8	43
Jul	123	153	143	35.6	61	82	94	102	46.6	50.2
Aug	150+	155	145	123.6		101	95.5	107	105	
Sep	150+	187	161.5	112.5		97	101.5	150+	93	
Oct	150+	160.5	143.5	95.5		83	91.5	150+	84	
Nov	150+	139.5	138	75.5		68	77	92	71	
Dec	135	108	91	46.75		52	58.5	69	45	

ENVIRONMENTAL EDUCATION AND OUTREACH

8

- ✘ The "Big Five" article layout and content was approved by the EMC and distributed to the Table Talk and Tygerburger for possible publication. SG & RM will distribute this article with the MRNR pamphlet to residents during August. The information has also been uploaded on the website.
- ✘ On the 8th of July 7 children & 4 adults attended MRNR's first School Holiday program on the Big Five of Milnerton. The day was a huge success and an e-mail of thanks for an enjoyable day was received from one of the participants. (The programme is attached for information).



GENERAL INFORMATION / OBSERVATIONS / MEETINGS

9

- ✘ On the 20th July Sipiwe, a groomsman from K4 stables, was found walking in the southern area. New stable employees need to be informed about the rules and regulations of MRNR.

ITEMS TO BE ADDRESSED IN THE UPCOMING MONTHS

10

Regular monthly / bi-monthly tasks	✓	Ongoing
✘ Path maintenance & ad hoc alien clearing		
✘ Vegetation & water level monitoring / bird counts		
Finalising TBNR IRMP		Ongoing
School Holiday Program	✓	8 Jul
Large mammal Night Game Drive	✓	19 Jul
Amphibian survey		Aug
Red data species condition		Aug
Flora transect survey		Aug/Sep/Oct
Handpull <i>Vicia</i>		Aug/Sep
Fish species survey		2011
Grysbok reintroduction		2011
MRNR Annual Review/Newsletter		Dec 2011

Small “Big Five” of Milnerton

School Holiday Program

MRNR

08 July 2011

Materials required

Introduction (Northern entrance) **(15 min)**

Introduction of the Nature Reserve. Rules of the reserve. Explaining the programme for the day. Introduction of the Big Small Five.

Guided walk (Path around Northern Area) **(30 min)**

A description and interesting facts will introduce each species. Specimens like scat, spoor etc will be shown will identify the species using their ID chart.

Activity 1 (Northern Area) **(45 min)**

Divide children into smaller groups. Groups are shown what they need to do. Hand out group armbands. The group needs to find all the missing descriptions and picture puzzle at flags within the northern area. Children take turns to retrieve one card at a time. When all the cards have been collected each team can then assemble their poster.

Break (Southern Area) **(30 min)**

Guided Walk (Southern Area) **(30 min)**

Walk through Southern area looking for Grysbok, Black Headed Heron etc.

Activity 2 (Southern Area) **(20 min)**

Scavenger hunt.

Closing (Northern entrance) **(10 min)**

Which five animals did we learn about today?